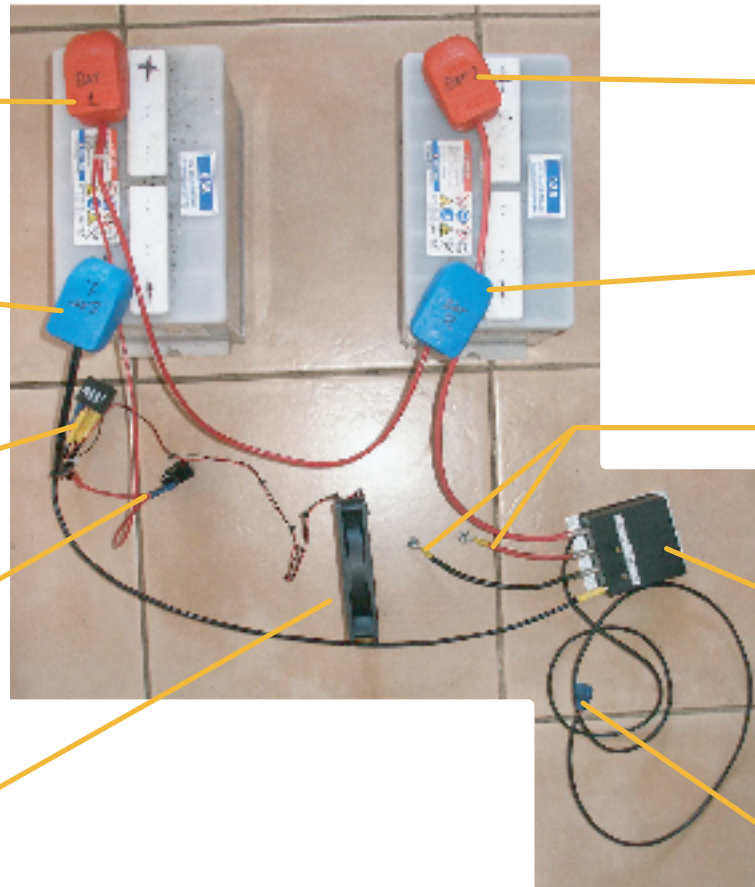


APPROXIMATE LAYOUT OF 24V WIRING AS SHOWN FROM ABOVE (BUT WITHOUT C5 COMPLICATING MATTERS) !

FRONT



BATTERY 1 POSITIVE

24v Battery Interconnection Cable
and
12v Positive (fan and relay power
via switch)

BATTERY 1 NEGATIVE

24v Negative to Relay and on to PWM
controller.
also
12v Negative to relay and Fan

Relay

Power switch (can replace original
lighting switch)

12v FAN

BATTERY 2 POSITIVE

Direct connection to PWM
Controller

BATTERY 2 NEGATIVE

Negative end of battery
interconnection cable.

Motor connection adaptor leads

PWM 24v Controller unit

Throttle button connections