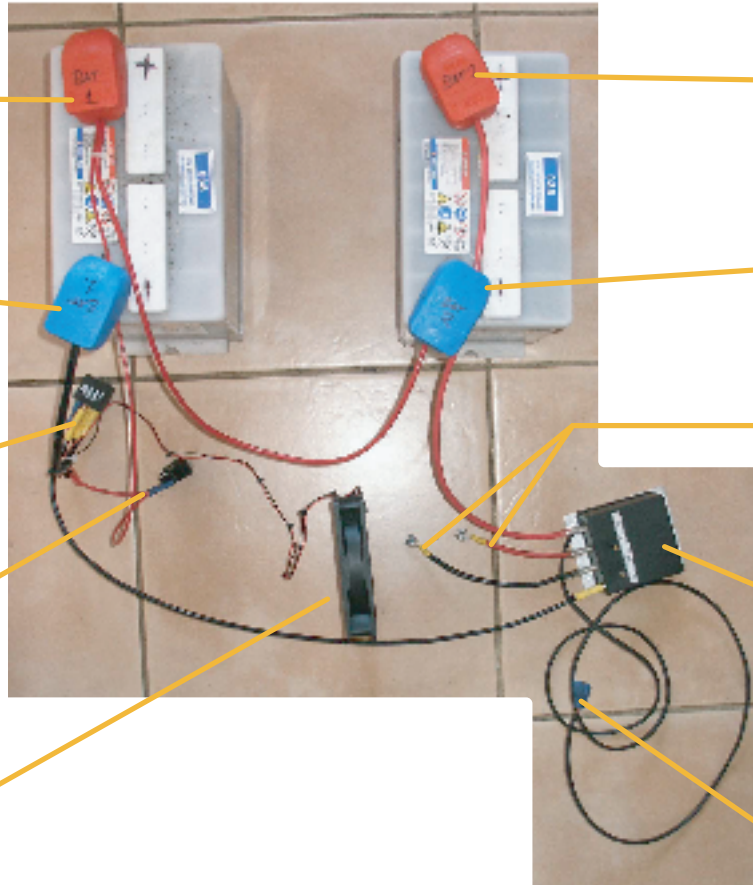


V 1.02 Updated 30-9-05

APPROXIMATE LAYOUT OF 24V WIRING AS SHOWN FROM ABOVE (BUT WITHOUT C5 COMPLICATING MATTERS) !

FRONT



BATTERY 1 POSITIVE

Battery Interconnection Cable positive end.
and
12v Positive (fan and relay power
via switch)

BATTERY 1 NEGATIVE

24v Negative to Relay and on to PWM
controller.
also
12v Negative to relay and Fan

Relay

Power switch (can replace original
lighting switch)

12v FAN

BATTERY 2 POSITIVE

24v Positive Direct connection to PWM
Controller

BATTERY 2 NEGATIVE

Negative end of battery
interconnection cable.

Motor connection adaptor leads - these can
be discarded if the original ring connectors
from the motor are removed and replaced with
6mm spades to directly connect with the
output of the controller.

PWM 24v Controller unit

Throttle button connections